



2-6 Ratcliffe Cross Street

, London, E1 0HS

£2,975

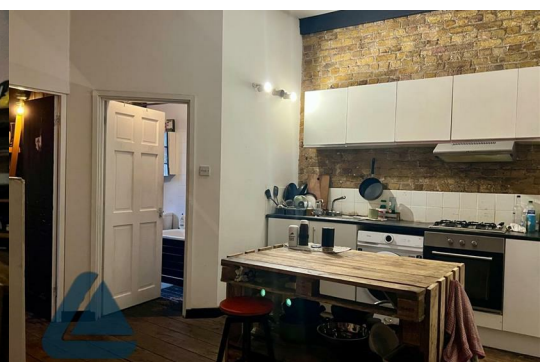


Nestled in the vibrant area of Ratcliffe Cross Street, London, this impressive flat offers a spacious and comfortable living experience. With two well-proportioned bedrooms, this property is perfect for individuals, couples, or small families seeking a modern urban lifestyle.

The flat features a generous reception room, providing an inviting space for relaxation and entertainment. The layout is designed to maximise comfort and functionality, making it an ideal setting for both quiet evenings at home and lively gatherings with friends.

Accompanying the bedrooms are two stylish bathrooms, ensuring convenience and privacy for all residents. The contemporary design and quality finishes throughout the flat enhance its appeal, creating a welcoming atmosphere that you will be proud to call home.

One of the standout features of this property is the expansive downstairs area, which offers ample space for various uses, whether it be for storage, a home office, or additional living space. This versatility adds



Area Map



Floor Plans



Energy Efficiency Graph



These particulars, whilst believed to be accurate are set out as a general outline only for guidance and do not constitute any part of an offer or contract. Intending purchasers should not rely on them as statements of representation of fact, but must satisfy themselves by inspection or otherwise as to their accuracy. No person in this firms employment has the authority to make or give any representation or warranty in respect of the property.